

Over View

WLINK G500 is the rugged industrial cellular router which can work on 4G/3G cellular network to provide reliable, secure and high speed wireless connectivity, it is built-in one of the world's leading ARM Cortex A9 Dual Core 800MHz CPU, supporting Wi-Fi 802.11N and A/C. G500's heavy-duty design caters for transportation and mobile deployments such as Wi-Fi bus, Wi-Fi on board and other Public transit.

WLINK G500 equips with 4x Gigabit Ethernet switch, serial port, I/O, USB as well as a variety of configuration option including GPS, SD Slot. It offers redundant SIM Slot for automatic switching for reliable network, plus terminal block power capability. VPN features also can be configured in WLINK router, allowing you to utilize virtual private network service through a 4G/3G wireless router and built for stresses and workload of a modern industrial or commercial environment.



• Simultaneous Dual-Band 802.11n&ac Wi-Fi

WLAN standard IEEE 802.11ac is the benchmark for a unique high-performance WLAN experience. Simultaneous 2.4G and 5G Wi-Fi gives you two independent Wi-Fi networks which also help reduce 2.4G Wi-Fi congestion and interference to ensure fast and reliable network service to your passengers.



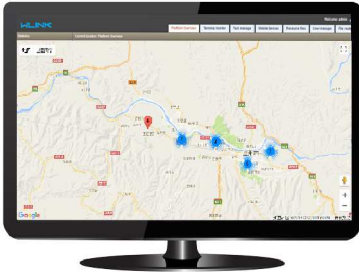
• Integrated Captive Portal with Social Wi-Fi

WLINK G500 comes with a customizable captive portal where shows a welcome message informing the passenger of the conditions of access, may allow the passenger to login and require authentication, payment and acceptable use policies, the captive portal option contents splash page for images or video advertising.



• Enjoy journey on the road

Enjoy internet and abundance offline programs, which makes journey become more exciting. Increase ridership and customer attraction by providing additional network service to passengers.

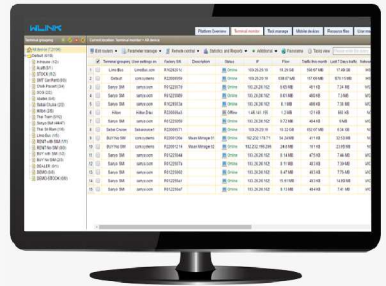


• GPS Fleet Tracking and Management

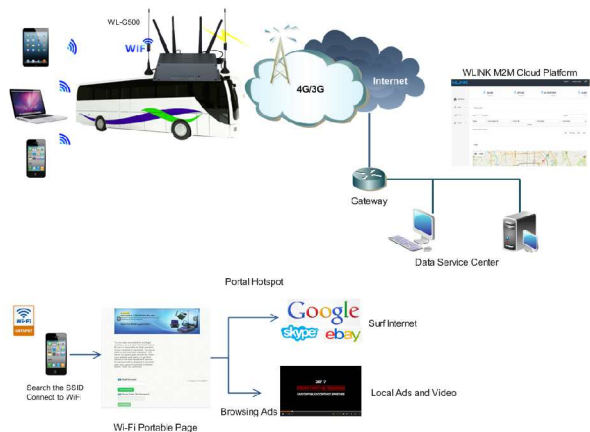
WLINK G500 is with the option to built-in GPS module for fleet tracking and management, reduce your stress, improve your fleet's performance.

• Cloud-Based Platform Management

WLINK cloud management platform provide easy setup, centralized configuration, network analysis and maintenance of large installations of remote WLINK series devices. With the platform, the operator can remotely manage and monitor all of routers, Wi-Fi users status, update configuration files, Statistics reports, firmware upgrade and advertisement Update.



• Wi-Fi Bus Application Diagram



Features

- Industrial robust, heavy-duty metal enclosure and connectors designed for shock and high vibration environments
- High data speed via FDD / TDD 4G or 3G network, 2G backward compatible
- Strong electromagnetic interference Resistance
- Built-in watch dog, Multi-link detection
- Four Gigabit Ethernet ports for networking flexibility
- High speed 802.11 ac/b/g/n Wi-Fi support as access point or client with 2x2 MIMO antenna technology and integrated hotspot functionality
- USB for additional interfaces or extra storage
- 2x Digital Input (DI), 1x Digital Output (DO), suit for I/O communication
- MIMO antenna for 4G
- ARM Cortex A9 Dual Core, 800MHz CPU.
- Standard equipped with Dual SIM for Failover or
- Backup between two network
- Schedule reboot via SMS/Timing
- Always online, reboot automatically if disconnected to ensure continual connection
- Flash -32MB
- NAND Flash 512MB
- DDR2: 16Bit 128MB
- SD slot (32 ~ 256GB option)
- Shock and vibration resistant

Specification

Optional Supports Mobile Network	<ul style="list-style-type: none"> • FDD 4G / TDD 4G • DC-HSPA+/HSPA+/HSPA/WCDMA/UMTS • EDGE/GPRS 	Ethernet Standard	<ul style="list-style-type: none"> • IEEE 802.3 • IEEE 802.3u • IEEE802.3ab
Software	<ul style="list-style-type: none"> • Standard OS: WLINK Firmware • Optional OS: OpenWrt • Supports SDK, provide user programmatic interface 	GPS(Optional)	<ul style="list-style-type: none"> • Antenna interface: SMA, 50 ohms • Sensitivity: better than -158 dBm • Protocol: NMEA-0183 V2.3
Interface	<ul style="list-style-type: none"> • 4x Gigabit Ethernet • 1x RS-232(RS485 option) • 1x Console Port • 3x Digital I/O(input/output) • 7x SMA-K antenna interface • 2x Standard SIM/R-UIM interface • 1x SD interface • 1X expansion USB 2.0 • 1x DC Terminal block Power connector 	Other	<ul style="list-style-type: none"> • Dimension: 220mm x 150mm x 45mm (not including antenna) • Weight: 600g • Operation temperature: -30~+70 • Store temperature: -40~+85 • Related humidity: <95% (non-condensing) • Guarantee: one year
LED instruction	<ul style="list-style-type: none"> • PWR • WLAN A/C • WLAN N • SYS • NET • LAN (LAN1~LAN4) 	WLAN	<ul style="list-style-type: none"> • Standard: IEEE 802.11ac/b/g/n • 2x2 MIMO • 2.4G 300Mbps, 5G 866Mbps • WEP, WPA and WPA2 encryption • AP, Client, station, bridge mode support
Captive Portal	<ul style="list-style-type: none"> • Support for Wired and Wireless LAN Clients • Support RADIUS Authentication • Time and Usage Quotas on Open Access Mode • Built-in Customizable Splash Page 	Device management	<ul style="list-style-type: none"> • Local or remote web browser (IE v8 or above) • CLI/Telnet command • M2M management platform (optional) • SSH configure (optional)
Route protocol	<ul style="list-style-type: none"> • Static route • RIPv2/OSPF dynamic route 	Firewall & Filter	<ul style="list-style-type: none"> • IP packet/Domain/MAC filter • NAT • DMZ
VPN	<ul style="list-style-type: none"> • IPSec • PPTP/L2TP client • GRE/IPIP 	Power Consumption	<ul style="list-style-type: none"> • Power Communications: Operate 500mA@+12VDC, • Idle: 240mA@+12VDC • Power Supply: 5 - 32 VDC (48VDC extendable)
Approval	<ul style="list-style-type: none"> • EN 300 328 v 1.7.1 (2006-10) • EN 301 489-17 • EN 301 489-1 • EN 301 511 • EN 301 908-1 • EN 301 908-13 • EN 60950-1 • EN 55024:2010 • EN 61000-3-2 • EN 61000-3-3:2008 • EN 62311:2008 • EN 55022:2010/AC:2011 	Package Content	<ul style="list-style-type: none"> • 1x 4G/3G Router • 2x 2.4 Wi-Fi antenna • 2x 5G Wi-Fi antenna • 2x 4G Magnetic antenna • 1x Ethernet Cable • 1x Power Supply Adapter • 1x Mounting Kits