

WLINK[®]

WL-R130 4G Router

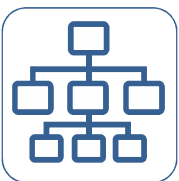
Industrial 4G LTE Cat4/Cat6 Router



WLINK R130 is a compact and versatile 4G LTE gateway router tailored for the users/ integration companies to integrate into their system for various of M2M/(I)IoT application especially where installation space has challenge including metering, traffic systems, military, homeland-security and emergency-response. It is engineered to meet diverse interface requirements, featuring a configuration that includes 1xLAN, 1xRS232, and 1xRS485 ports. The R130 is equipped with a state-of-the-art CPU processor, ruggedized enclosure and powerful internal components to withstand extreme temperature, dust and moisture. Its terminal block for secure power supply, ensuring reliability and efficiency in demanding environments.

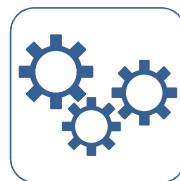
Powered by an embedded Linux operating system, the R130 boasts a suite of rich software features. It's not just a router; it's a multi-functional device capable of acting as a DTU (Data Terminal Unit) or RTU (Remote Terminal Unit), providing flexible solutions for your industrial needs. With optional GPS capability, enable the embedded router ideal for IP camera, fleet tracking or access management applications.

Additionally, the R130 is eSIM supported, making it easier to switch from one carrier to others.



Easy to integrate, deploy or mount

Flexible choice of different application. Support various of mounting way includes DIN Rail Mount, Rack Mount and Desktop etc.



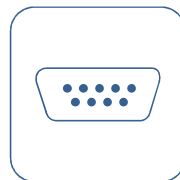
High performance, Industrial-Grade Design

Fan-free design, Robust housing and a wide operating temperature range (-40°C to 70°C). Resilient against strong magnetic interference. Dual power supplies for redundancy, isolated input, and a wide voltage range (7.5V DC to 32V DC)



Secure and Reliable Network

Support robust security features, such as Multiple VPN – IPSec/OpenVPN/DMVPN/ WireGuard/ ZeroTier/ GRE/PPTP/L2TP, NAT, port forwarding, a stateful firewall and packet filtering, data encryption, Access Control List (ACL) and provide secure, reliable communications.



Serial Communication

With its RS232 and RS485 interfaces, the R130 is an ideal solution for serial communication with Meter/Sensor/Controller, supporting Serial port to IP features, Modbus RTU/TCP protocol, and MQTT protocol uploading.



Various Network Protocol

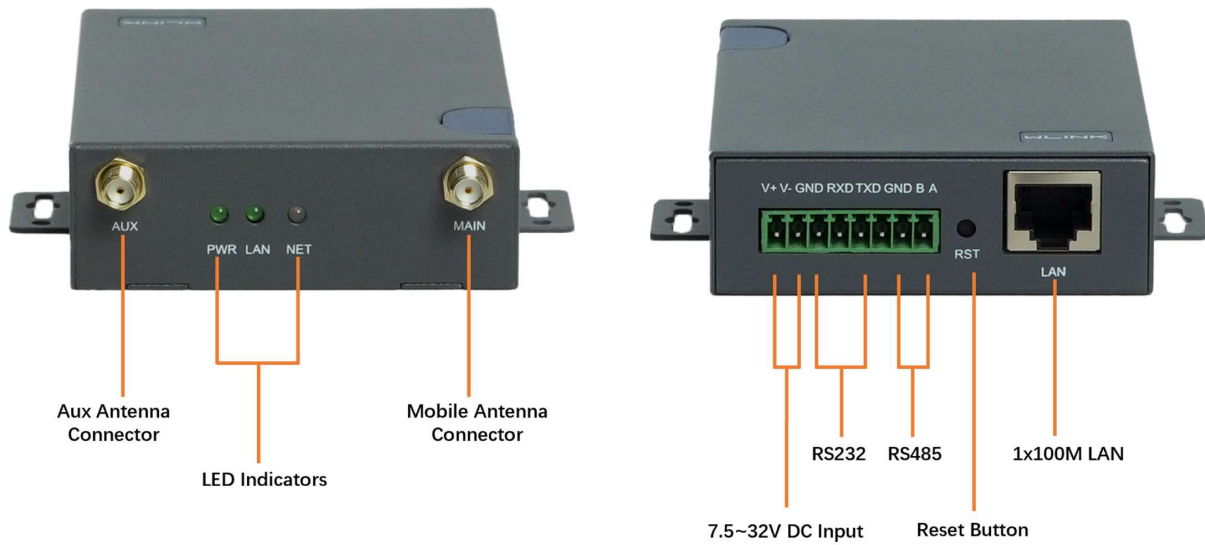
Supports Modbus RTU, TCP, HTTPS, MQTT, TR-069, SNMPv3 and IPv6 protocol, make the router satisfy with different network demand.



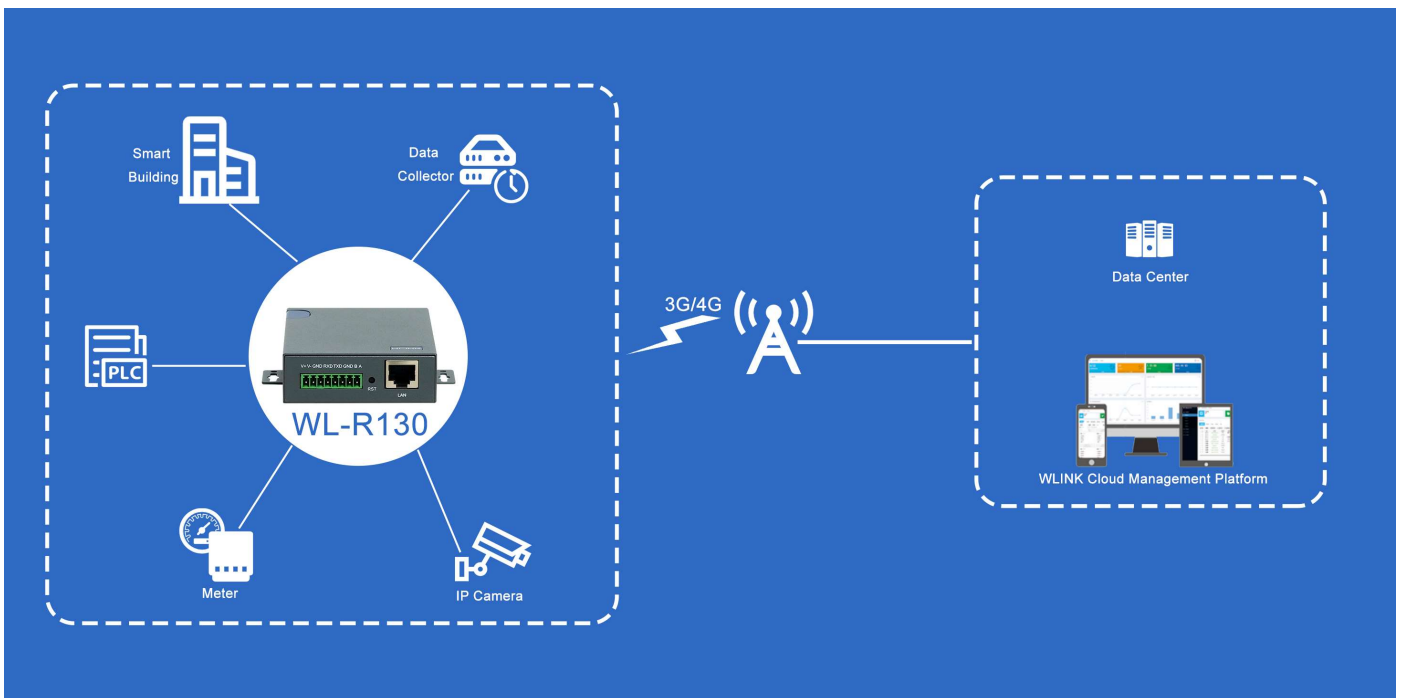
eSIM optional

Flexible choice for different carriers, making it easier to switch from one carrier to another.

Interface Diagram



Typical Application



Specification

Physical

Network	5G RedCap/LTE-A/LTE/LTE CAT1 HSPA/WCDMA/UMTS EDGE/GPRS	Hardware System	MIPS 580MHz CPU 128Mb Flash 512Mb DDR2 RAM Hardware Watchdog eSIM Optional
Interface	2x SIM Slots 1x 10/100M Ethernet Port 1x RS232(TTL Optional), 1x RS485 1x DC(2 Pins plugs) 2x SMA-K(Female) 4G Antenna 1x Reset	GPS(Optional)	GPS Sensitivity: -160dBm GPS Accuracy: 2.5m CEP Update Rate: 1Hz@5Hz Time to First Fix: Cold Status 27s, Hot status 1s. Protocol: NMEA-0183 2.3V
LED Indicators	PWR LAN NET	Wi-Fi(Optional)	IEEE 802.11 b/g/n 150Mbps(1T1R) Output Power 11n HT40 MCS7: 15dBm, 11b CCK: 18dBm, 11g OFDM: 15dBm Sensitivity 300Mbps: -65dBm 54Mbps: -73dBm 11Mbps: -86dBm
Consumption	Voltage: DC +7.5~32V (standard 12V/1A power adapter) SIM/R-UIM Card: 1.8V/3V Idle: 110mA@+12VDC Online: 170mA@+12VDC	Other	Galvanized metal with grounding Screw Dimension: 103mm x 73.5mm x 25.5mm (not including antenna) Weight: 225g (not including accessories) Operation temperature: -30~+75℃ Store temperature: -40~+85℃ Relative humidity: 0~95% (non-condensing) Guarantee: two years
Compliance	FCC CE RoHS CCC	Package Content	1x WL-R130 Router 2x 4G Magnetic antenna 1x Ethernet Cable 1x Power Supply Adapter 1x DIN Rail Mount Kits

Software

Operating System	WLINK OS based Linux	Firewall	SNAT/DMZ Port Forwarding IP Filter Mac Filter Key Word Filter Domain Name Filter
Network Protocol	IPv4/v6, PPPoE, UDP, TCP, ICMP, NTP, DHCP, Modbus, HTTP/HTTPS, UPNP, SNMPv3, TR069, DDNS, Telnet/SSH, MQTT	Network Monitoring	Ethernet Ports Status ICMP Check Traceroute Data Capture Bandwidth Graph Data Traffic Graph System Debugging Log
VPN	CRE Tunnel Zerotier VPN Wireguard VPN Client and Sever supported OpenVPN: TLS1.2, Encryption as DES, RC2, BF,3DES, CAST5,AES,SEED 45 encryption methods PPTP/L2TP: Client mode, L2TPv3 supported IPSec: GRE Over IPsec, L2TP over IPsec, Two tunnels Failover, IKEv1, IKEv2, DES, 3DES, AES128, AES192, AES256 multiple encryption methods supported. DMVPN: mGRE, NHRP, IPsec	Network Features	Dual-SIM Failover WAN/4G Failover Serial Port Client/Server Applications AT command over IP VRRP VLAN IP Passthrough Bandwidth Management Static Routing/Policy Routing RIPV2/OSPF/BGP Dynamic Routing
Router Management	Local/Remote GUI Telnet/SSH SNMP v3/TR069 WLINK M2M Management Platform	WLAN Mode	IEEE 802.11b/g/n, AP, Wireless Client and Ethernet Bridge modes WiFi usersup to 128 simultaneous connections Wi-Fi Hotspot Wireless Black/White List Multi-SSID WPA Personal WPA2 Personal WPA/WPA2 Personal AES, TKIP, Auto Cipher modes

Ordering Information

Partial Order Number List

Part No.	4G/4G+	3G	SIM	Category	DL	UL	WiFi	Region	GPS/GNSS
WL-R130-LA	FDD-LTE: B1/B3/B5/B7/B8/B20/B28 TDD-LTE: B38/40/41	B1/B5/B8	Two	Cat4	150M	50M	/	Asia Europe Africa	
WL-R130-LA-w							802.11b/g/n		
WL-R130-LA-g							/		√
WL-R130-LFX	FDD-LTE: B1/B3/B7/B8/B20/B28A TDD-LTE: B38/40/41	B1/B8	Two	Cat4	150M	50M	/	Asia Europe Africa	
WL-R130-LFX-w							802.11b/g/n		
WL-R130-LFX-g							/		√
WL-R130-LA1	FDD-LTE: B1/B2/B3//B4/B5/B7/B8 /B28/B66 TDD-LTE: B40	B1/B2/B4B5/B8	Two	Cat4	150M	50M	/	Australia Latin America	
WL-R130-LA1-w							802.11b/g/n		
WL-R130-LA1-g							/		√
WL-R130-LF1	FDD-LTE: B1/B2/B3/B4/B5/B7/B8/ B28 TDD-LTD: B40	B1/B2/B5/B8	Two	Cat4	150M	50M	/	Australia Latin America	
WL-R130-LF1-w							802.11b/g/n		
WL-R130-LF1-g							/		√
WL-R130-LF2	FDD-LTE: B2/B4/B5/B12/B13/B14/ B66/B71	B2/B4/B5	Two	Cat4	150M	50M	/	North America FirstNet	
WL-R130-LF2-w							802.11b/g/n		
WL-R130-LF2-g							/		√
WL-R130-LF3	FDD-LTE B2/B4/B5/B12/B17	B1/B6/B8/B19	Two	Cat4	150M	50M	/	Japan	
WL-R130-LF3-w							802.11b/g/n		
WL-R130-LF3-g							/		√
WL-R130-LG	FDD-LTE: B1/2/3/4/5/7/8/ 12/13/18/19/20/25/26/28 LTE-TDD: B38/39/40/41	B1/B2/B4/B5/ B6/B8/B19	Two	Cat4	150M	50M	/	Global	
WL-R130-LG-w							802.11b/g/n		
WL-R130-LG-g							/		√
WL-R130-LF6	FDD-LTE: B1/B3/B5/B7/B8/B20/B28/ B32 TDD-LTD: B38/ B40 /B41	B1/B3/B5/B8	Two	Cat6	300M	50M	/	Asia Europe Africa Australia	
WL-R130-LF6-w							802.11b/g/n		
WL-R130-LF6-g							/		√
WL-R130-LF7	FDD-LTE: B2/B4/B5/B7/B12/B13/ B17/B25/B26/B29/B30/B66 TDD-LTD: B40	B2/B4/B5	Two	Cat6	300M	50M	/	America	
WL-R130-LF7-w							802.11b/g/n		
WL-R130-LF7-g							/		√

Note:

1. If request other frequency band model, please consult wink sale person or local distributor.
2. Please consult WLINK or local distributor if request GPS or Storage.
3. Please consult WLINK or local distributor if request special features
4. The above list only includes partial available models, please consult wink sale person if can't find a suitable one.

Shenzhen Wlink Technology Co., LTD

Address: 2A, Building F5, TCL International E-city, Zhongshanyuan Rd. Nanshan, Shenzhen, China

Tel: 86-755-86089513

Web: www.wlink-tech.com