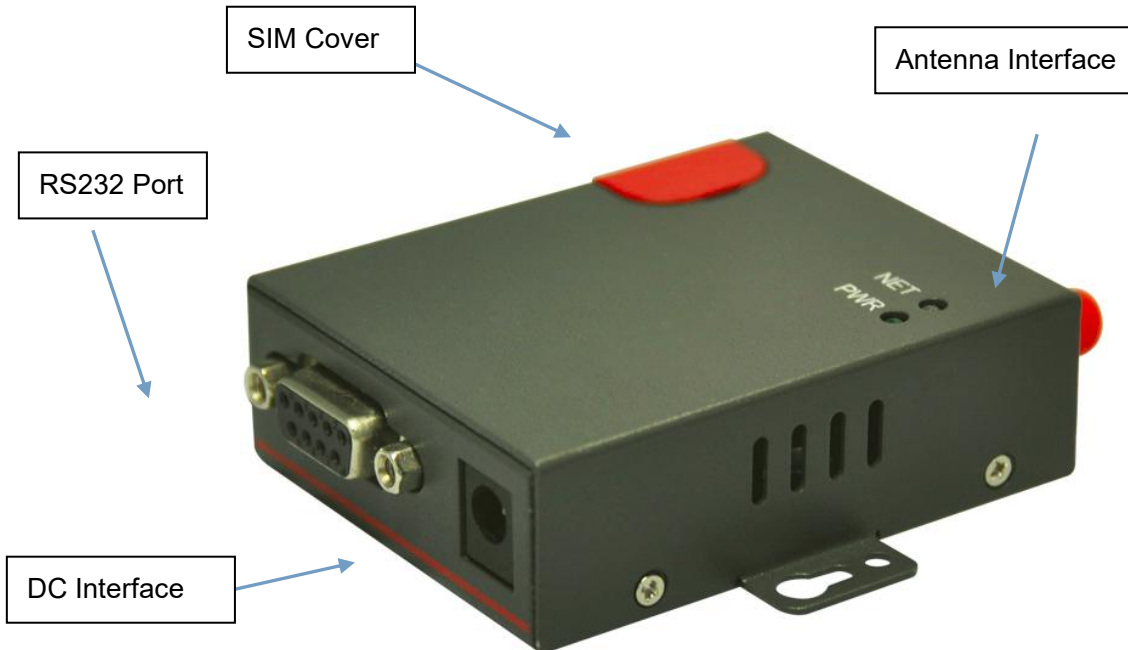


## WL-M100 Serial Port Modem Quickstart

### 1. WL-M100 Modem interface and panel indication



### 2. AT Command

Default baud rate as 115200bps. You might implement AT command as request.

If need more WL-M100 AT commands, may refer to 3G/4G module AT commands manual.

Quectel UC15 Commands Manual for WL-M100-1 and WL-M100-2 3G modem

Quectel EC25 Commands Manual for WL-M100-3 modem

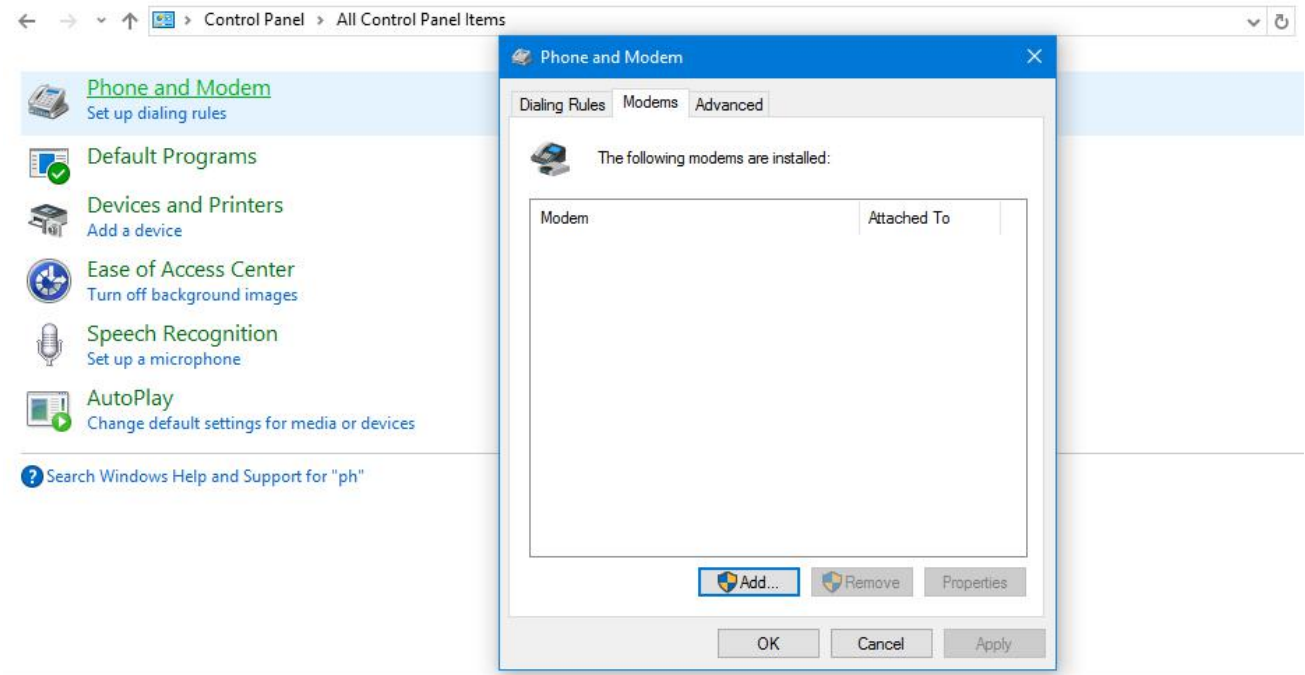
```
at
OK
at+csq
+CSQ: 17,99

OK
at
OK
at
OK
```

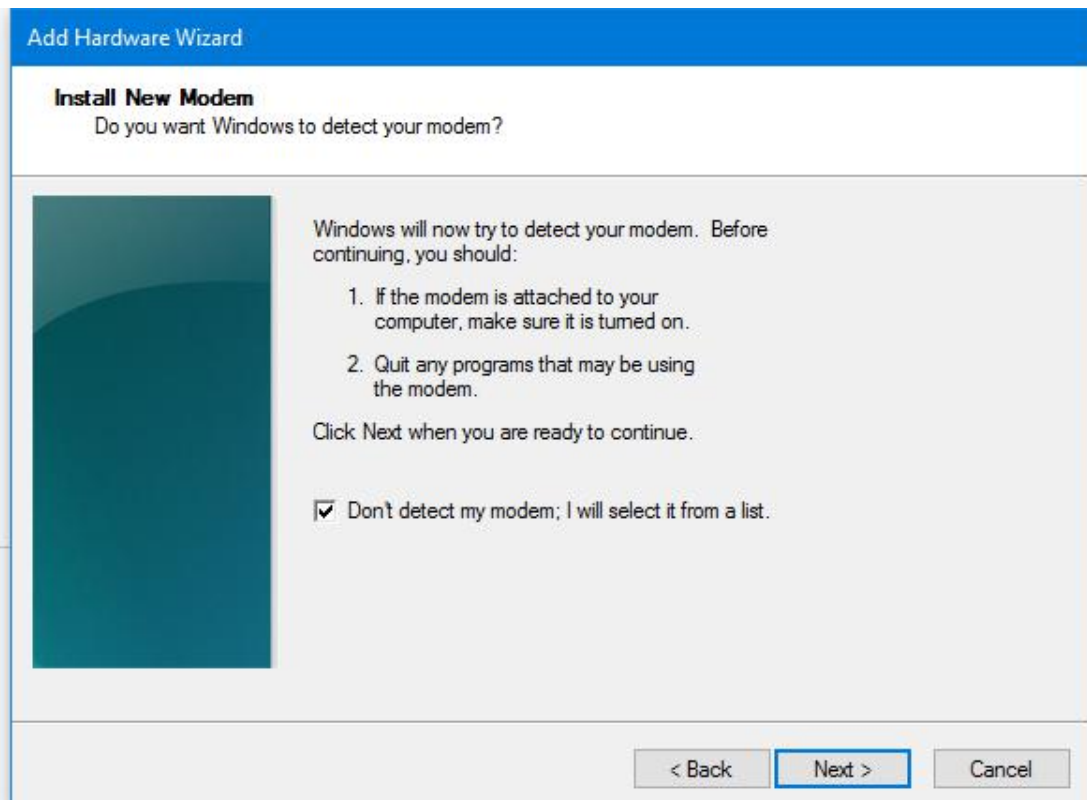
### 3. Install Modem in Windows OS(WIN10 as example)

3.1 Start from "Control Panel", Double click "Phone and Modem", and select "Modem".

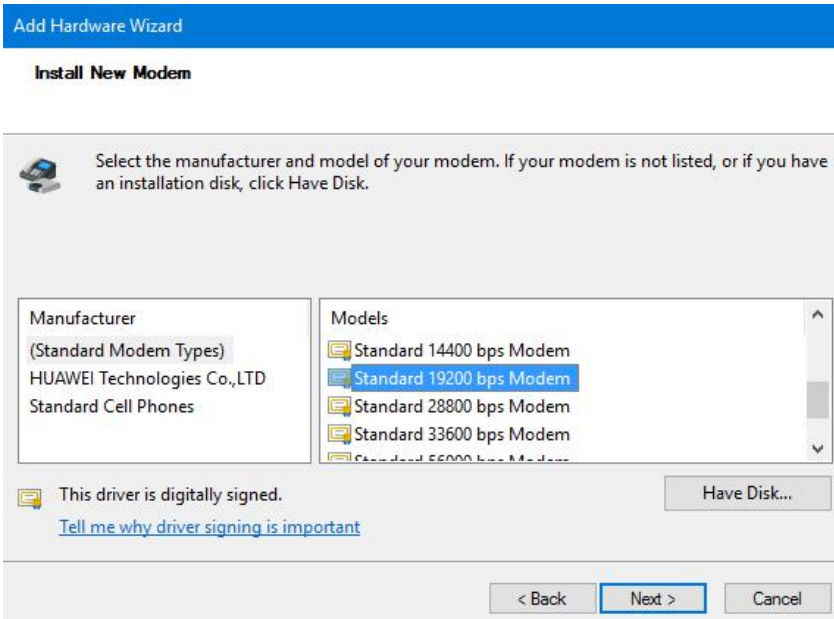
Click "Modem" button, and Click "Add" button.



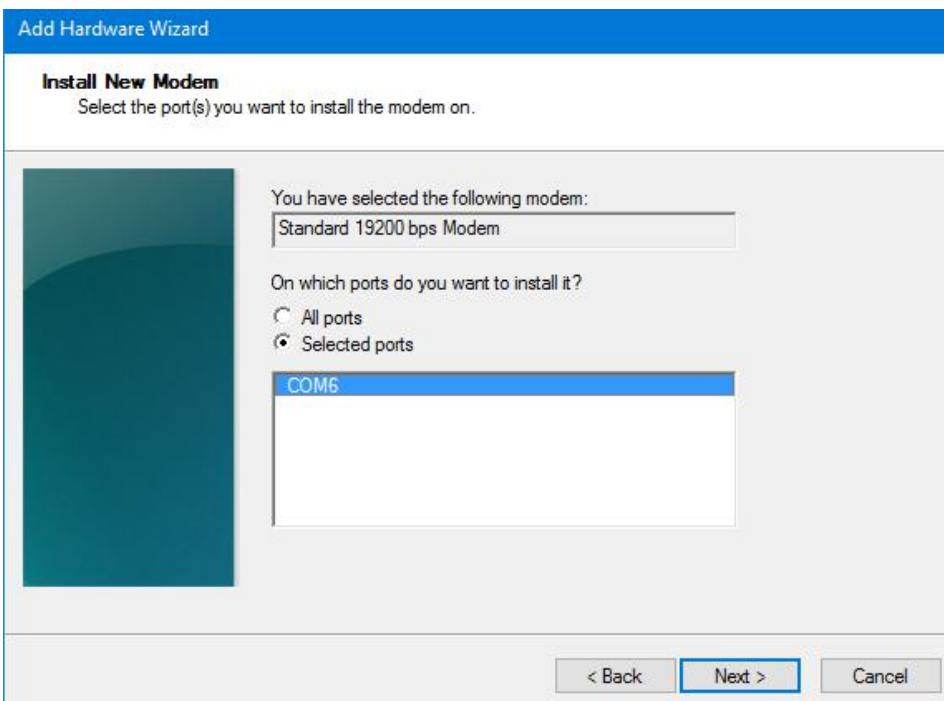
Click “Do not detect my modem, I will choose from a list”, click “Next” to continue



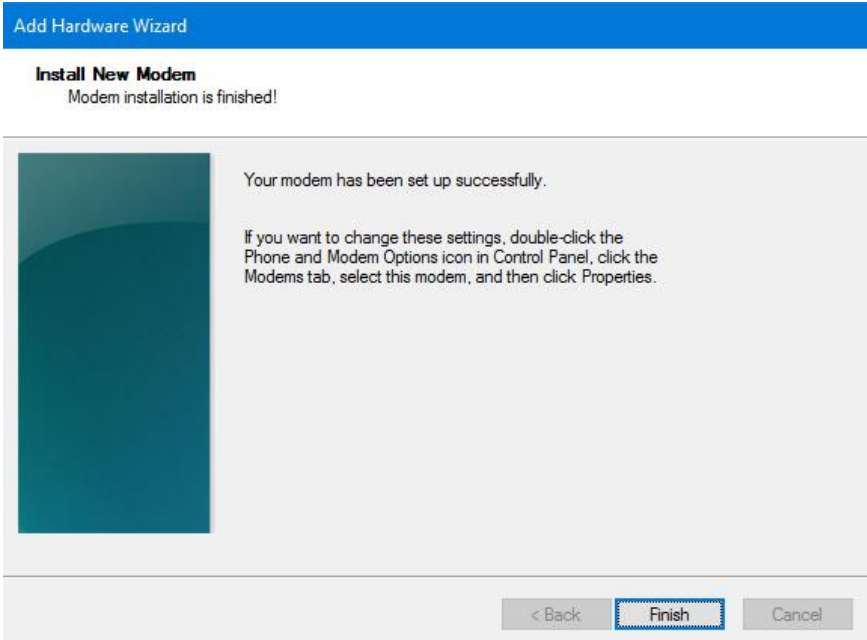
Refer to below Figure, Manufacture: Choose “Standard Modem Types”, Type: Select “Standard 19200 bps Modem”, click “Next”.



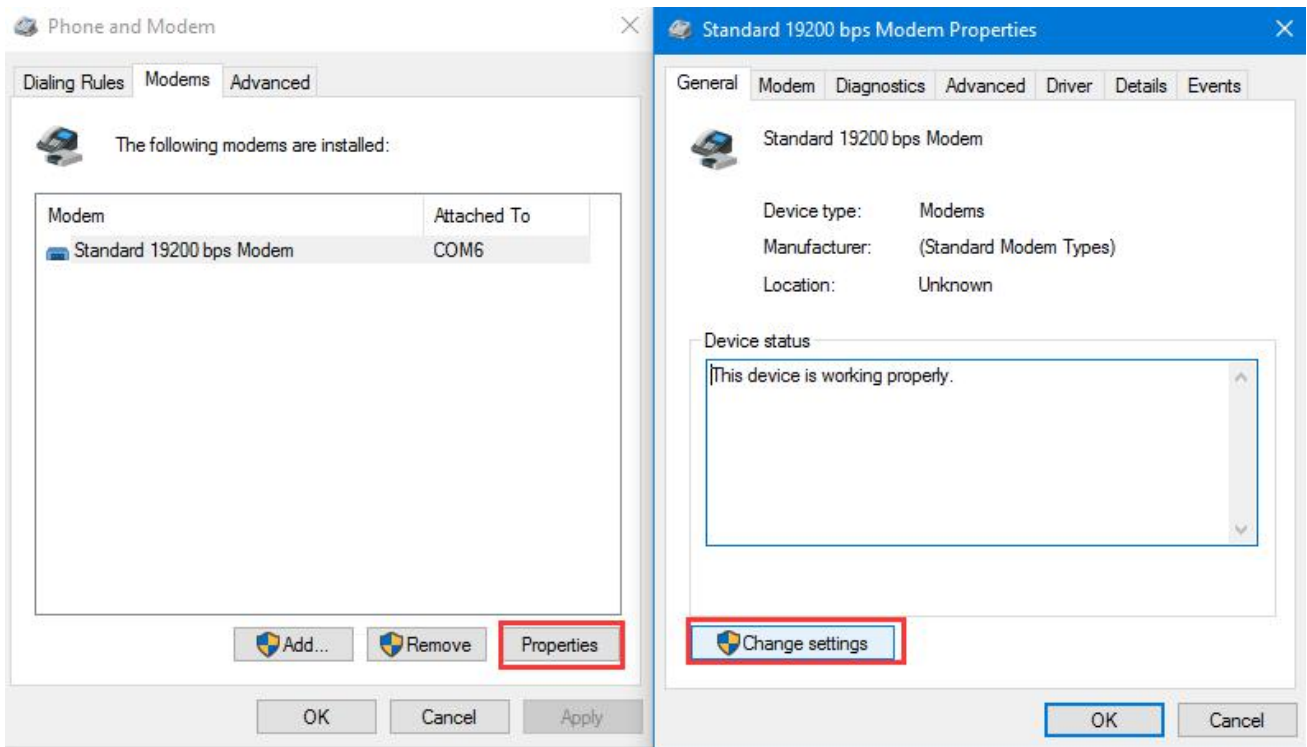
Select COM port(which is auto generated by PC), click “Next”, and then you will finish the installation.

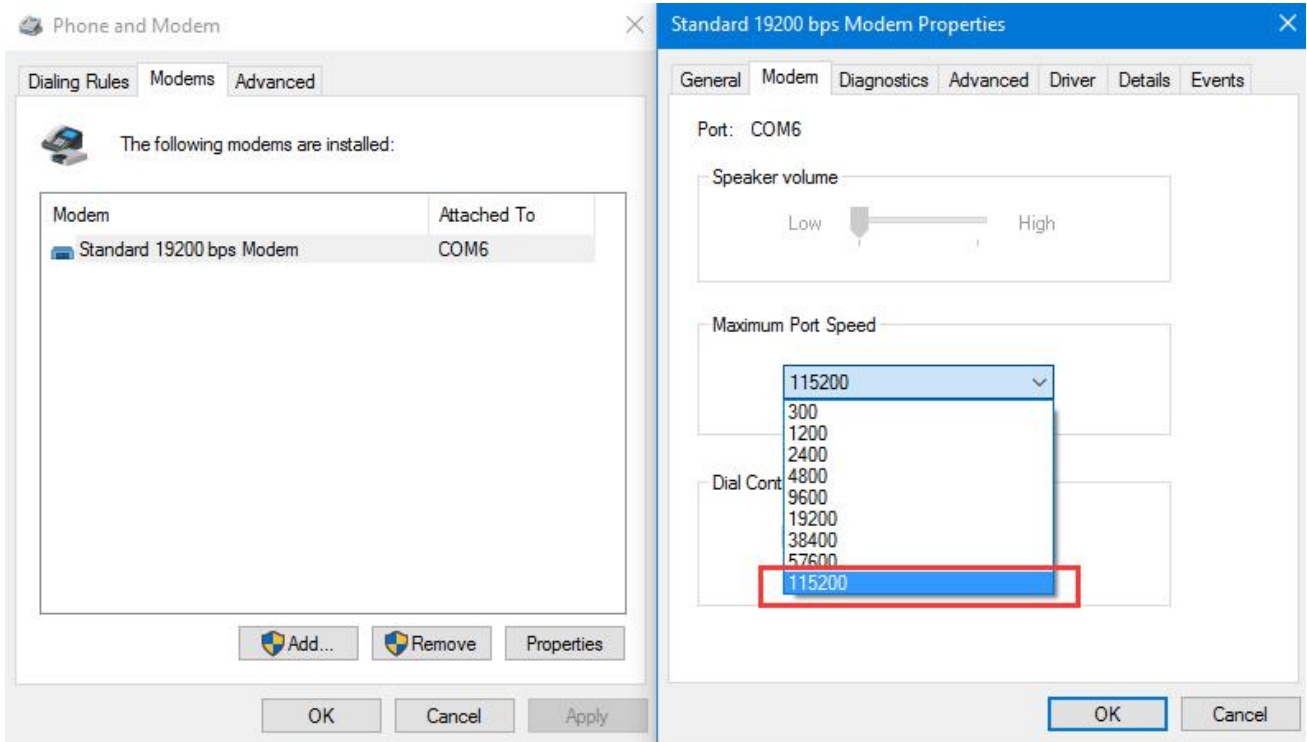


Click Finish button to succeed your modem installation.

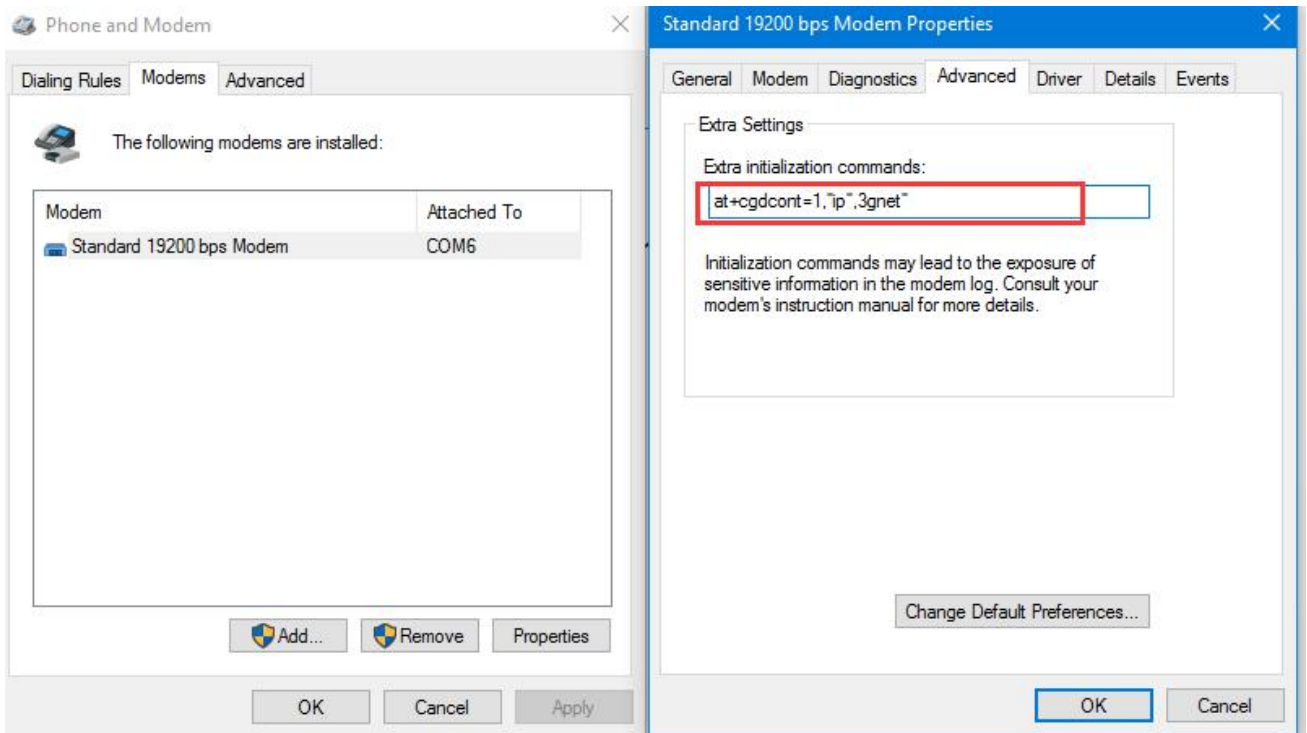


3.2 Modify Modem Speed to 115200bps in Properties as below.





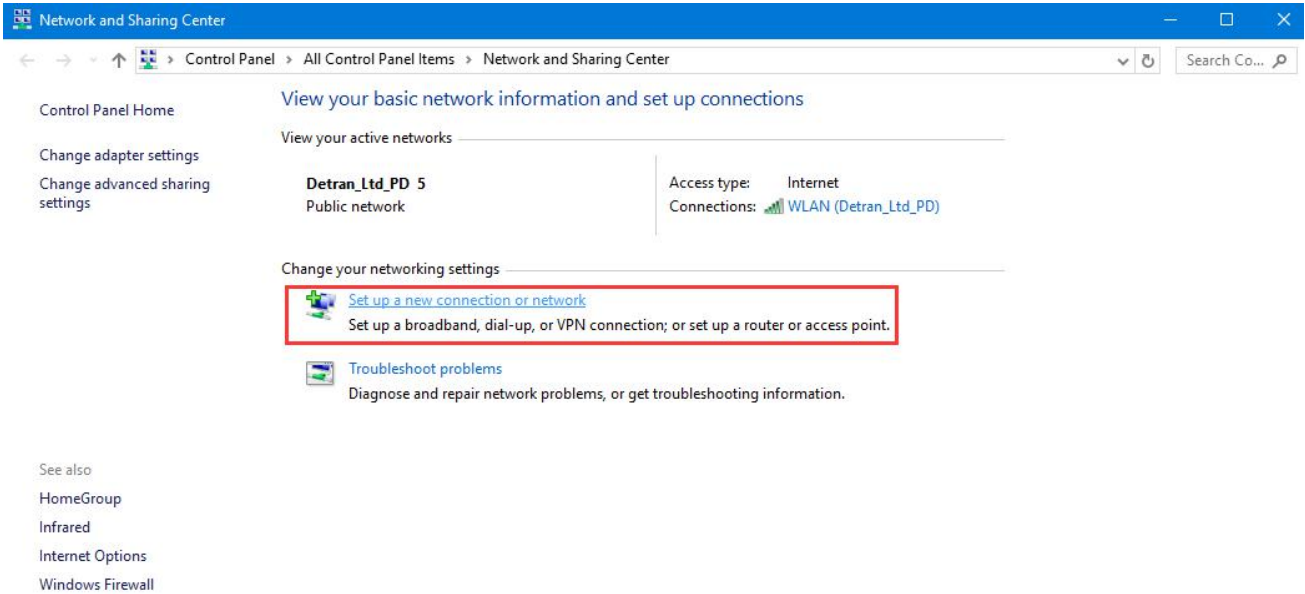
3.3 Click Advanced Button to add Modem dialup command such as `at+cgdcont=1,"ip",3GNET`". The APN 3GNET should be as the same as SIM card APN in Properties.



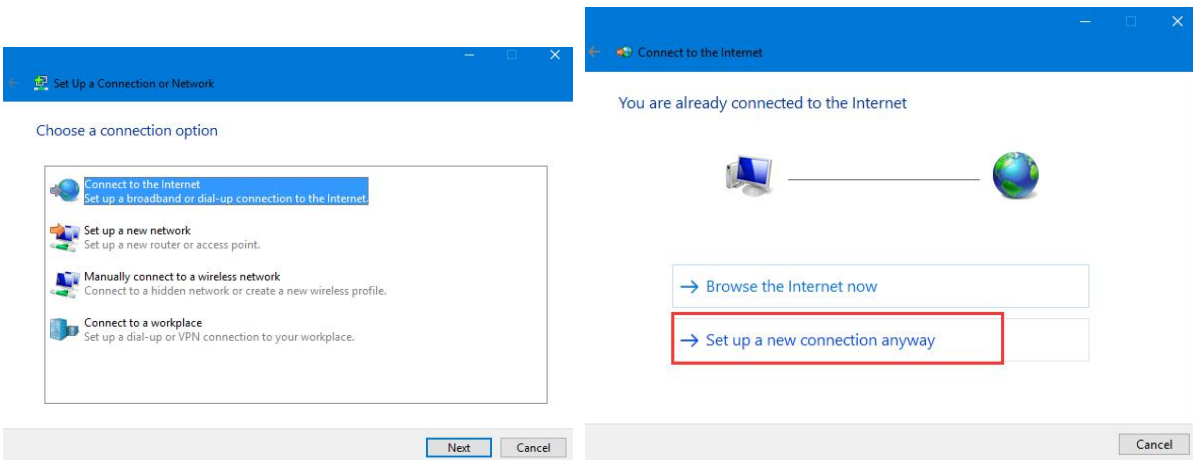
#### 4. Create Dialup Connection

### 4.1 Create dialup connection

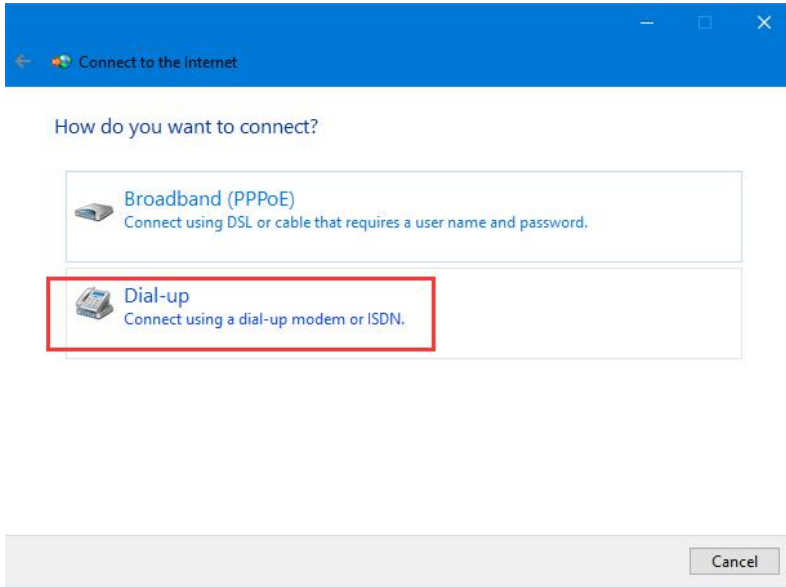
Start from “Control Panel”, Open “Network and Sharing Center”, and click “Set up a new connection or network”.



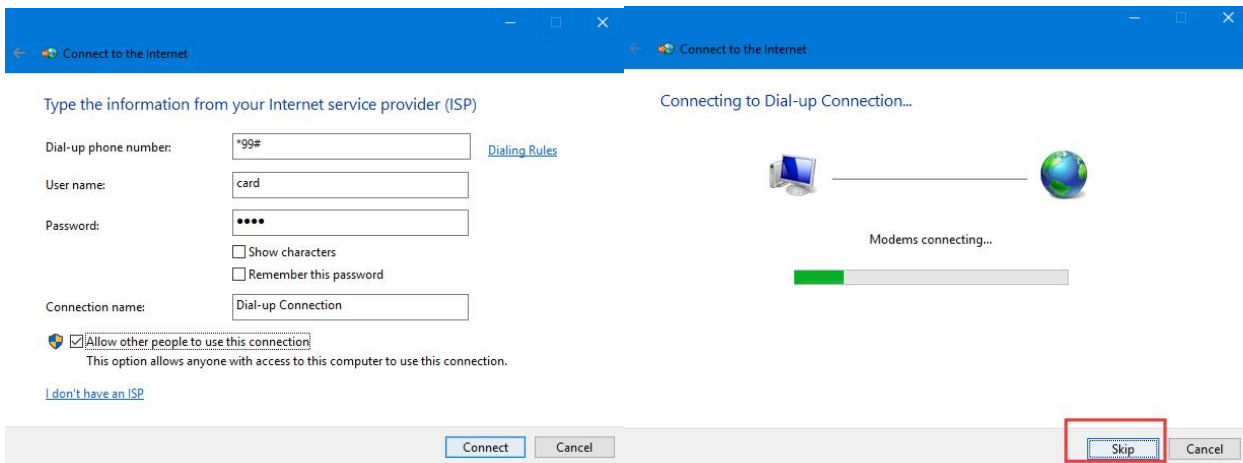
Click “Next” button to Connect to the Internet.



Click “Dial-up”

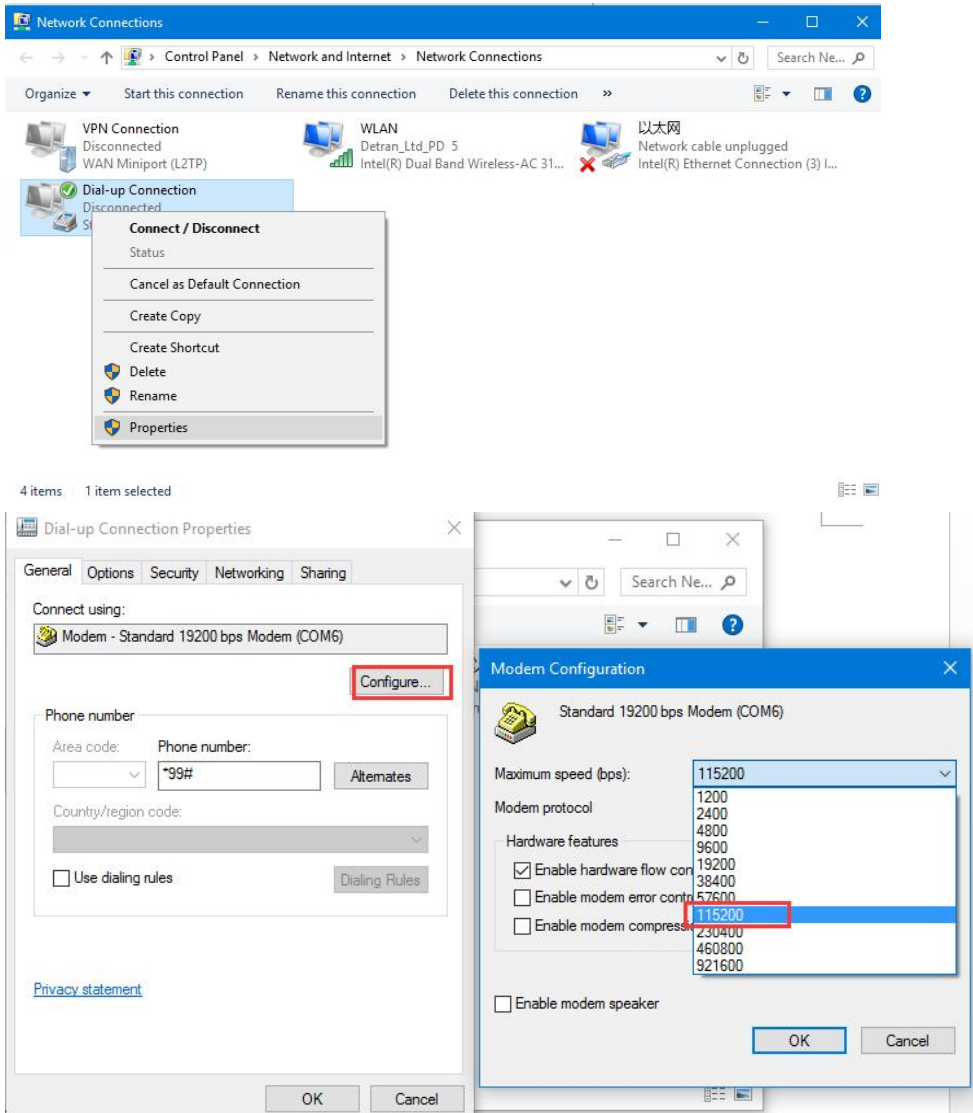


Input dialup number such as \*99# for 3G network, the username and password as the same as SIM card's. Finally click "Connect" and "Skip" to continue the wizard.



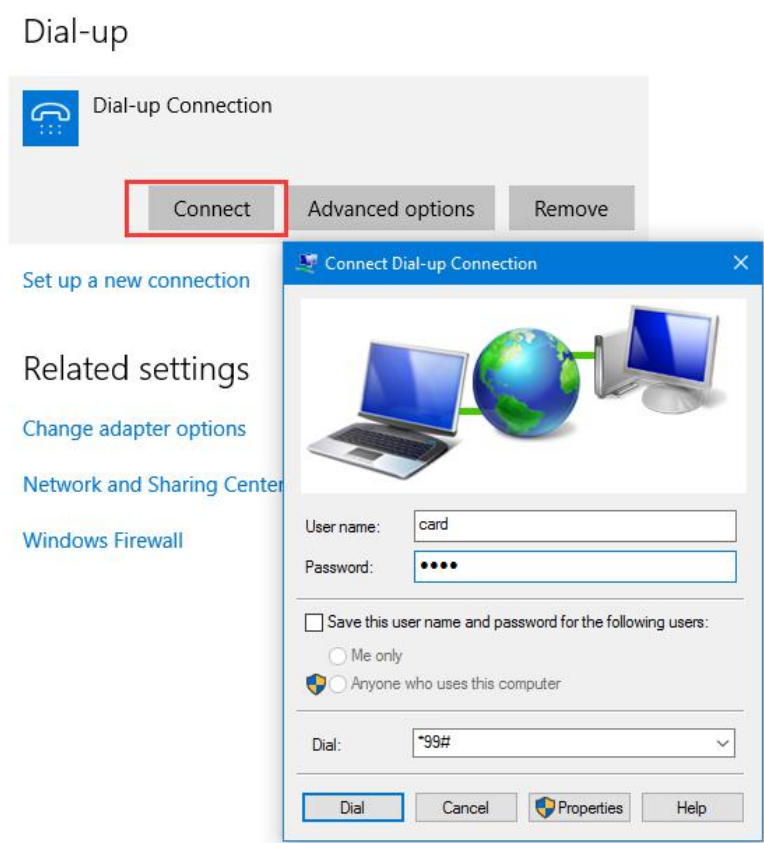
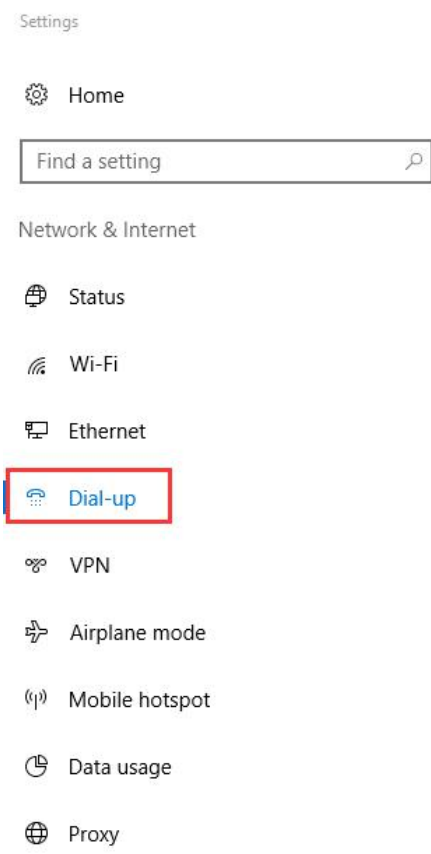
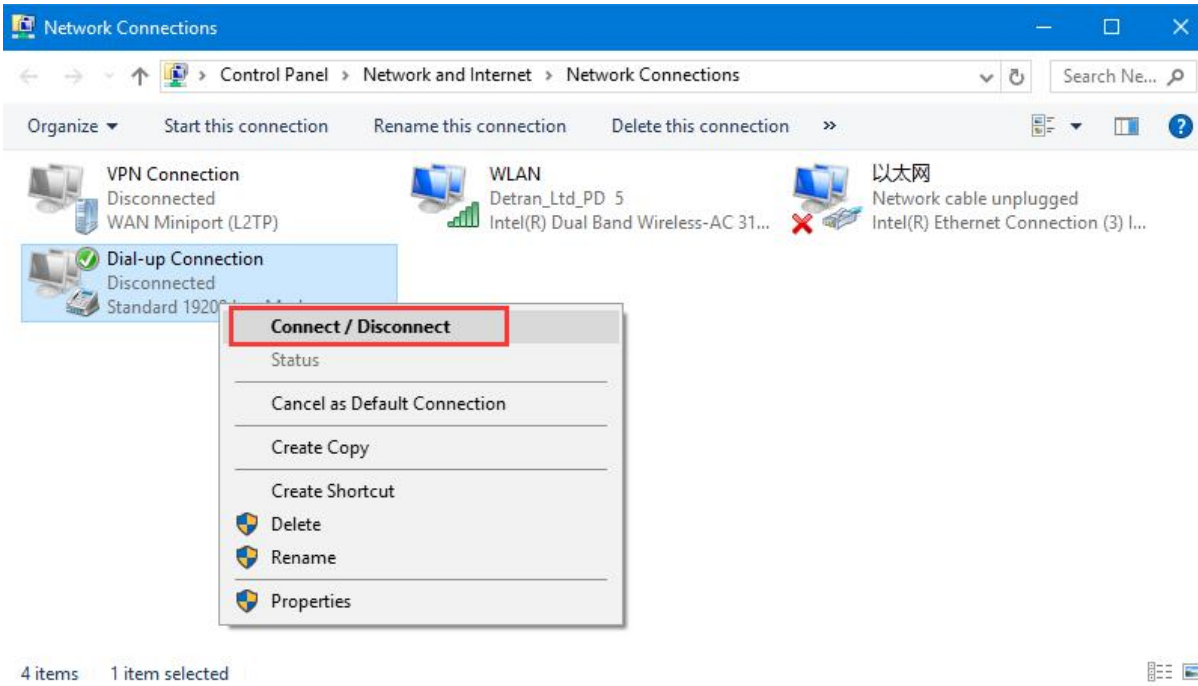
4.2 Returning to Network Connections, click Dial-up Connection to change modem configuration.





4.3 Click “Connect/Disconnect” to complete the dialing.





-- The end